

Nature-wise Espoo

The roadmap leads the way to the overall no net loss and strengthening of biodiversity in Espoo



Towards no net loss of biodiversity

Espoo strives to be a pioneer in reconciling a growing city with diverse nature. As part of the implementation of the urban strategy, we have compiled the objectives and development measures into the Nature-wise Espoo roadmap. It aims to the no net loss of nature by 2035.

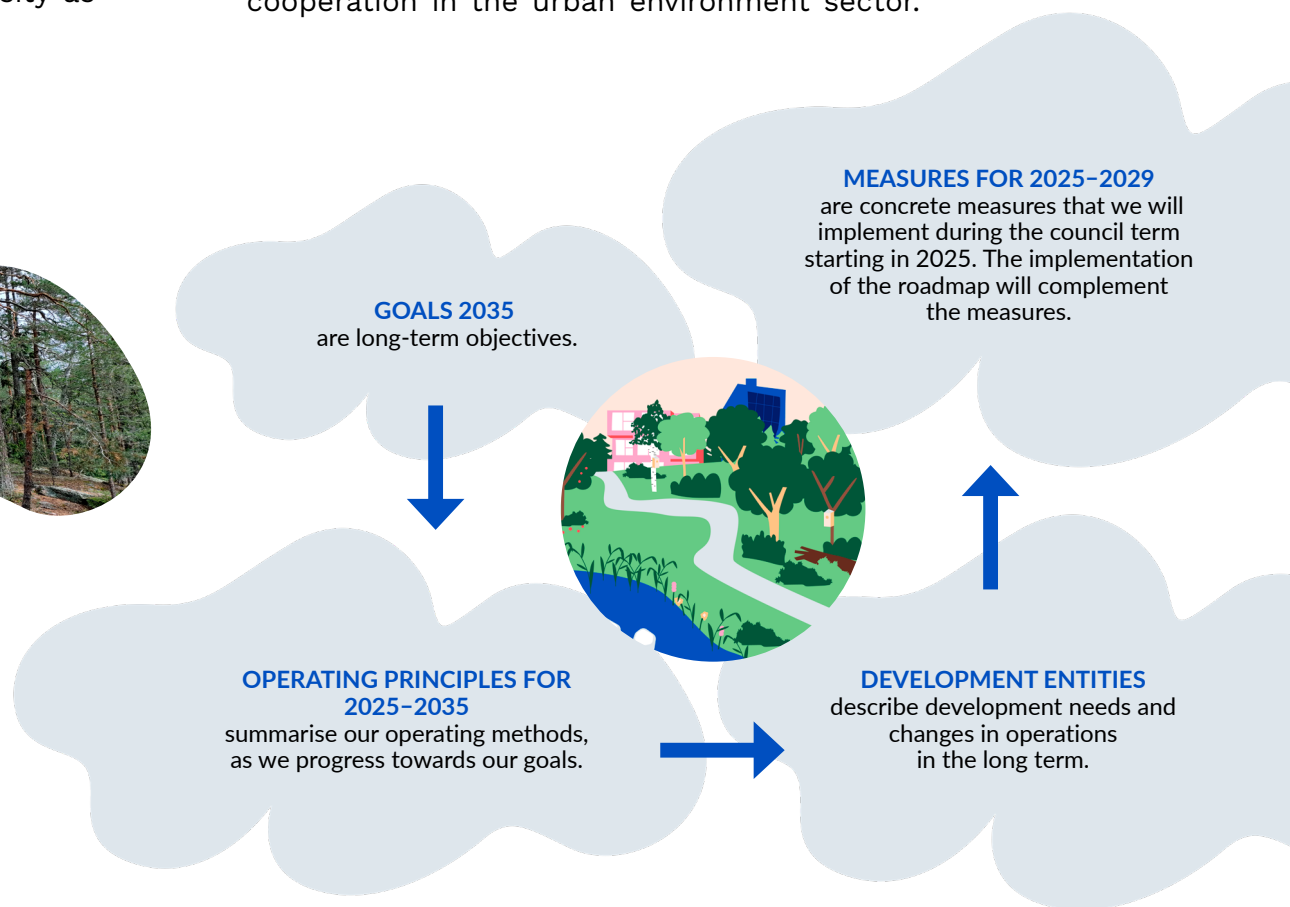
The roadmap is based on recognising the special features and values of nature in Espoo and on previous nature work. It draws on best practices and new ideas such as nature-based solutions and ecological compensation. The roadmap aims to avoid and mitigate adverse impacts on nature, as well as to enhance biodiversity as the city grows.

Nature is an important part of Espoo and the attractiveness of our city. We have local nature, valuable nature sites and a wide range of habitats, such as forests, flowing waters, lakes and seashores.



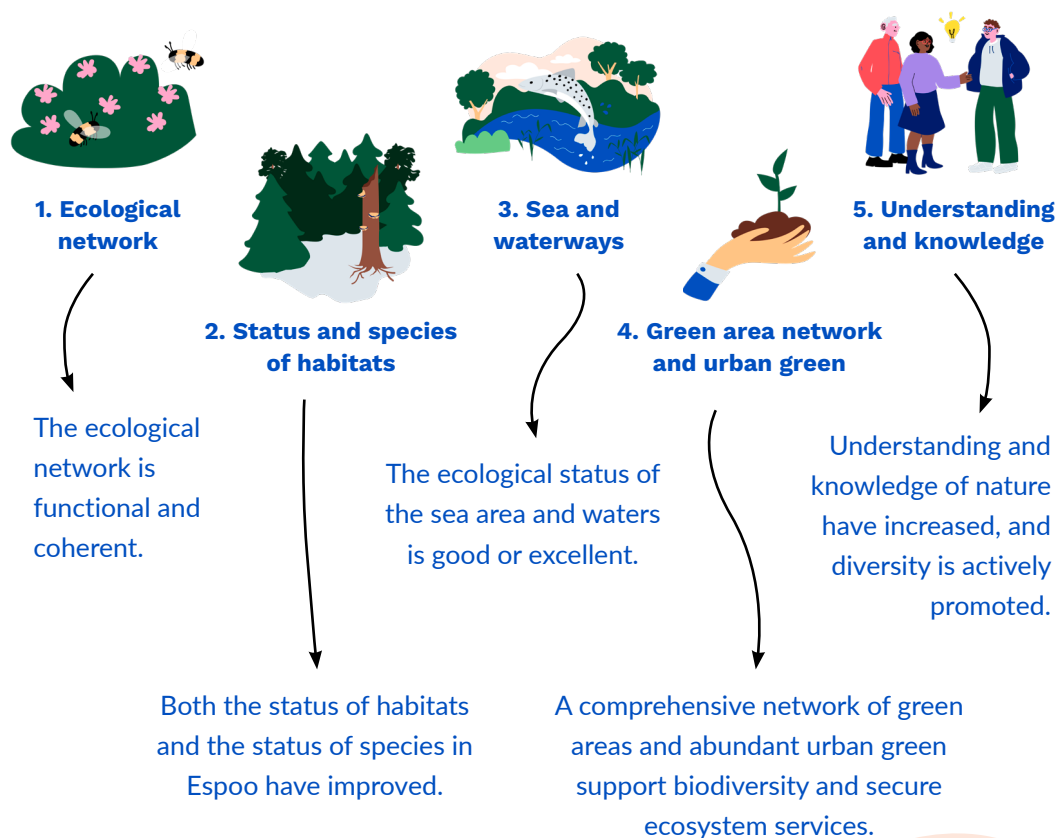
The roadmap guides our activities

The Nature-wise Espoo roadmap sets goals for safeguarding and increasing biodiversity in Espoo. The roadmap highlights the best methods available for us to help achieve the overall no net loss of biodiversity. The operating principles, development entities and measures support the achievement of the objectives. They have a comprehensive impact on the city's work in areas such as land use planning, environmental protection and nature management. The roadmap will be specified and the measures supplemented as the work progresses. The roadmap has been prepared in extensive cooperation in the urban environment sector.



Roadmap goals – target state in 2035

The goals of the roadmap are long-term objectives as we strive for the recovery and overall no net loss of biodiversity. Based on them, we identify development needs and measures and monitor the impact of the roadmap.



We strengthen the ecological network proactively and systematically

We support the recovery of biodiversity by restoring nature, i.e. improving the state of nature. We systematise the collection of nature information and the selection of restoration sites and methods. We carry out restoration experiments at pilot sites, from which we collect monitoring data for the development of restoration practices.

We protect valuable nature sites and also encourage other landowners to set up nature reserves.

We strengthen the ecological network by preserving and improving wildlife corridors. Concrete methods include wildlife crossings, underpasses and tree planting.

We plan and implement diverse and versatile green areas, water structures and urban green. We develop planning and operating principles and introduce new operating methods and tools, such as the regional and block-specific green factor.

We select climate change adaptation measures that also support biodiversity.



We maintain a knowledge base and apply the mitigation hierarchy of adverse impacts on nature

We safeguard the values and special features of nature in Espoo. We use the Espoo classification criteria of nature values as a tool, which means that sites are valued on the basis of habitat types, species and other general criteria.

We develop land use planning tools and impact assessment to maintain the coherence, interconnectedness and ecological quality of nature's core areas, as well as a comprehensive network of habitats as part of the urban structure.

Primarily, we prevent and mitigate harm to nature, but we also develop compensation practices and form common principles for the use of compensation. In the early stages, we collect experience through compensation pilots.

Preserving and maintaining biodiversity requires information on the state of nature and its changes. Comprehensive information allows us to assess, for example, the overall state of species and habitats and their favourable conservation status.

We are involved in the preparation of EU and national strategies, legislation, as well as guidelines and guides interpreting them. We will prepare for future changes and influence them in a timely manner.



We increase cooperation and involve residents & companies

We promote nature wisdom in our basic work and develop operating methods and personnel competence in the city organisation. We improve the flow of information, clarify the division of responsibilities and intensify internal cooperation to better manage the overall entity.

We communicate clearly and openly about our measures to safeguard biodiversity. At the same time, we encourage residents and companies to act for biodiversity.

Compared to other Finnish municipalities, the City of Espoo owns only a small amount of land. We can influence the biodiversity of areas owned by other landowners, especially by means of communication and guidance.

MONITORING

We monitor how the objectives and operating principles of the roadmap are realised as city units' measures, operating methods or changes in basic work for biodiversity. We set indicators for individual new measures, to monitor their progress. We also monitor biodiversity and the changes taking place in it.

Read more about biodiversity in Espoo on
the Nature-wise Espoo roadmap:

espoo.fi/en/naturewise



Nature-wise Espoo